

Potter Hanworth in the reign of Queen Elizabeth the Second



Potter Hanworth
in the reign of
Queen Elizabeth the Second

Images from 1952 to 2022 kindly loaned by many people.

Selected and edited by IJJ

June 2022

*In memory of
David John Jackson*

*Lincolnshire man born and raised. Dedicated public servant.
Instigator and motivator of projects for the community.
Field sportsman extraordinaire.
1939 – 1993*

Contents

<i>1950s</i>	<i>page 4</i>
<i>1960s</i>	<i>page 8</i>
<i>1970s</i>	<i>page 12</i>
<i>1980s</i>	<i>page 15</i>
<i>1990s</i>	<i>page 19</i>
<i>2000s</i>	<i>page 23</i>
<i>2010s</i>	<i>page 27</i>
<i>2020s</i>	<i>page 31</i>

FIFTIES

Overview



The village as it was. The view north from the church tower, almost certainly in late July 1955.



The coronation celebrations in 1953 included a fancy dress competition for the village children.

The Village Produce Association show was a much anticipated annual event.



The railway station still had a passenger service until 1955.



The Cricket team was thriving.



A very plain and utilitarian village.



SIXTIES



The 1960s show the beginnings of change. Some new houses have been added, farms are modernizing their buildings, and the growth of the sugar beet breeding operation has meanwhile been headlong.

The sugar beet breeding operation was now part of a large international company.



Laying the foundation stone for the new Wesleyan Methodist Sunday school on Barff road.

In the day, potato picking, heavy back-breaking work, often done by women.



Village activities continued much as before. A group of youngsters try their hand at “fishing for bottles” at the VPA show.



The main village shop and post office (long, long ago a decidedly disreputable public house) continued to do relatively good business.

Farm yards and farm dwellings were still rather utilitarian, and many were based on buildings dating to the nineteenth century or even earlier



SEVENTIES



The football, cricket and bowls players continued to flourish in the village, as did the team hairstyles.

At the end of the decade, the winter of 1979 was severe, with snow blocking some of the roads in and out of the village.



After the development of modern farm buildings in the village, the trend began of building farm buildings outside the built-up area.



The first changes began at the school, with the upgrading of cloakroom facilities in a new brick-built extension, replacing the porch which had stood for some 90 years.



The Silver Jubilee in 1977 was celebrated in the village with races of all kinds for all ages in the Playing Field, which since the late sixties had featured a much larger general-purpose sports pavilion, as well as the buildings for individual teams.



EIGHTIES

Many modern farm buildings can be seen inserted into ancient farmyards.

At the same time, relatively new farm buildings in the village centre are removed and older ones are renovated and re-built to become housing.

The housing stock is becoming more varied, with new homes on old sites, and some farmyards vanishing.





.In 1981 the village was visited by Lady Plowden, marking the earliest stages in the modernisation of the school.



One of the big events was the celebration of the Royal Wedding in 1981. Parties, competitions, fancy dress, dancing.



A Brief History and Guide to

CHRIST'S HOSPITAL ENDOWMENT 1883-1983

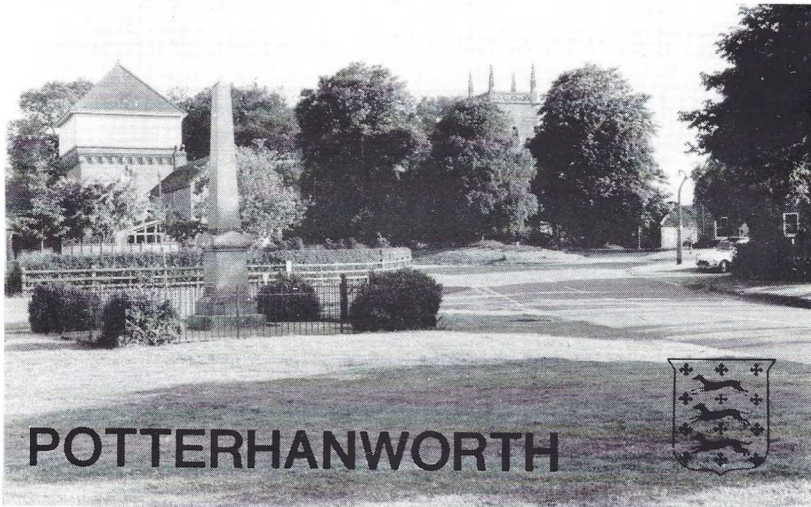


Photo Mr. W. Clarke 1982

“100 YEARS OF HERITAGE”

Dave Jackson — Governor, Christ's Hospital Endowment
— Secretary/Treasurer Potterhanworth
Festival Committee June 1983

The main local charity, “Christ's Hospital” came of age in terms of its independence, celebrating 100 years since the start of at least some local control within the village. There were fund raising activities to aid the celebration.

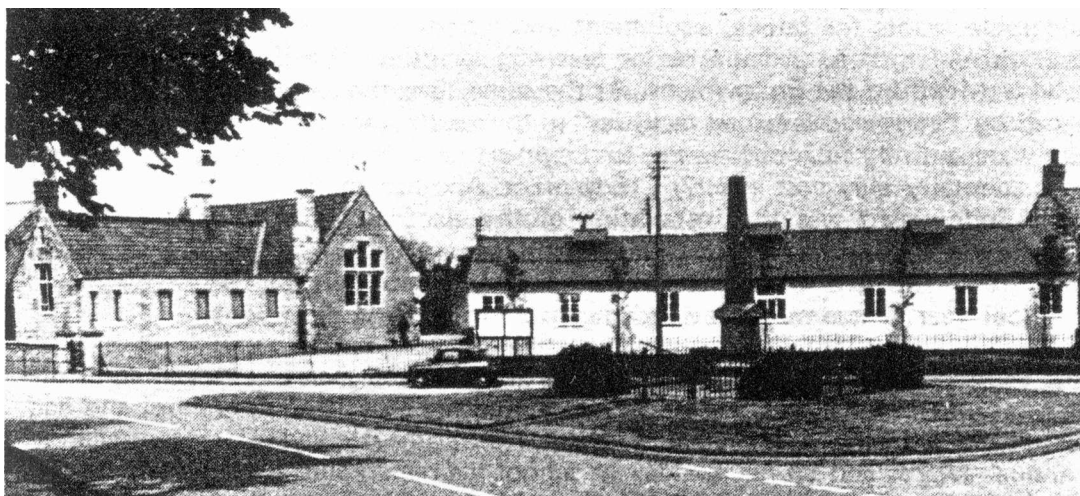


NINETIES



The village from the south in 1994-95. The first phase of the development in The Park is clearly visible, as is Fosters Gardens

The original village hall which had been brought to the village and re-assembled in 1920, after decades of upgrading and re-building, was finally replaced by the present brick-built memorial hall. The hall came rapidly into use for school events, parties, sales, and just about every and any other function. .



Doors open on new hall for villagers

VILLAGERS are reaping the benefits of a brand new £131,000 hall.

The Dr Richard Smith Memorial Hall in Barff Road, Potterhanworth has been officially opened by County Council chairman Coun Rodney Rainsforth.

A number of organisations, which formerly used the wooden huts of the village hall, are enjoying the new facilities.

Events

The hall is run and maintained by Christ's Hospital Endowment at Potterhanworth.

Secretary Mrs Jennifer Barrett said: "It is used by the over-60s, for bingo, social events and local schoolchildren for PE.

"The hall means a great deal to the villagers. We've always had the wooden huts — which used to be a hospital — but we needed new facilities."

● Up and running: Pictured outside the new hall are Lincolnshire County Council chairman, Coun Rodney Rainsforth (left) and Mrs Rainsforth with Brian Sentance, chairman of Christ's Hospital Endowment, Potterhanworth. (3343-27).

School events in the
new Memorial Hall,
which opened in 1993





The school children were involved in the churchyard, developing a wild garden there, and starting to get to grips with computer technology.

The group of keen helpers at the tree-planting on the edge of Barff Road, in 1991



2000s

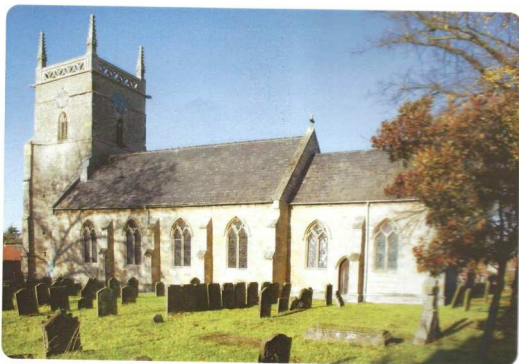


The view from the church tower looking north in 2006. The trees have grown, many buildings are re-purposed, new houses have arrived, the school has doubled in size and the memorial hall appeared.

The core of the village from the east.



*Potterhanworth
Church Guide*



*150th Anniversary Edition
Friday 8th December 2006*

The church celebrated the anniversary of the present building, with services and a new guide.

The school reached more or less its present layout in the middle of the decade, but changes continue, with the local charity providing a building for use by pre-school pupils.



The Queen's Golden Jubilee celebrations

School's new vision starts with a look back to its past

A £300,000 scheme is transforming the Victorian buildings at Potterhanworth CoFE Primary School to meet the demands of the 21st century.

But the 84 youngsters on the roll are literally re-living history as the building work uncovers the story of life in the village school over 150 years ago.

Builders are discovering buried treasure as they dig deep into the school playground to sink the foundations for two new classrooms, a library, cloakrooms and toilets.

Headteacher Carol Smith was delighted when the old Victorian yard was uncovered - along with two large clay pits each two metres deep.

She said: "Potterhanworth was the centre of a medieval pottery industry and for our children to learn about their heritage through first-hand experience is very important.

"Yes, we are having to manage with portable classrooms and a pocket handkerchief-sized playground at the moment, but the experience is great for the school.

"Because of the importance of the area, we have had archaeologists here to chart what is found before it is covered over once again.

"But the builders have also dug up small amounts of medieval pottery and the children are very excited about what is happening here."

Meanswhile, the school expansion scheme is continuing in two phases. The first will be completed in October, when all the building work is expected to be finished. The second will end in November with completion of all the exterior work.

Miss Smith, who has been head at the school for 10 years, added that the reaction of the pupils to the upheaval was typical of their attitude to school life.



DIGGING UP PAST: During the digging of the foundations for the extension to Potterhanworth School, the old Victorian yard and two clay pits were uncovered. Here, site manager of Gelder Construction Ian Elsey shows pupils some of the site. Picture reference: 2-1948-6.

Archaeological excavations prior to the building of the school extension brought to light features related to the nineteenth century school building and the much earlier mediaeval pottery industry which gives the village its' name.



Changes to the buildings in the village were accelerating. The first picture dates and shows the buildings of Church Farm. -build housing.

By 2005, the site was transformed into Kingsley Court, a combination of ancient farm buildings converted to dwellings, and new-build housing.



2010s



The royal wedding was celebrated both alone and in groups.

The Over 60s club, founded in 1960, celebrated its 50th anniversary



*Potterhanworth
Over 60s
Club*



*50th Anniversary
lunch
26th August 2010*



The Memorial Hall, a great asset for both school and village, further enhanced, first by the addition of a classroom giving more space and a direct link to the school.



A show of produce, both vegetables and flowers, together with crafts of various kinds returned to the village, becoming an annual event in September

For several years around the turn from the “Zeroes” to “Tens”, a Christmas Market and a May Fair were held, in and around the Memorial Hall and on the Playing Field.





In 2011, as in every year, the village comes together at the eleventh hour of the eleventh day of the eleventh month.

2020s



To commemorate the Platinum Jubilee, after consultations and discussions, a new flagpole was placed on top of the church tower.





Information boards were placed at several locations around the village to show details of parts of its' history.



Proceed on the eastern side of the road to the right of the main road.